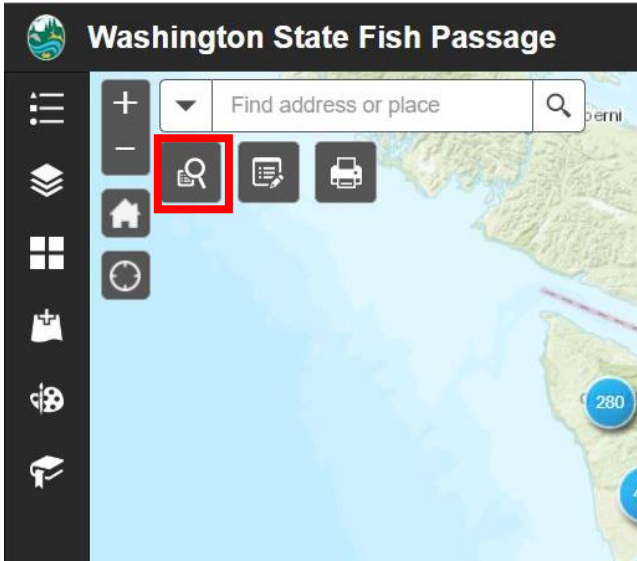




Washington State Fish Passage Web App: City-Owned Site Queries

If you need further assistance, please contact Rachel Bouchillon at: Rachel.Bouchillon@dfw.wa.gov

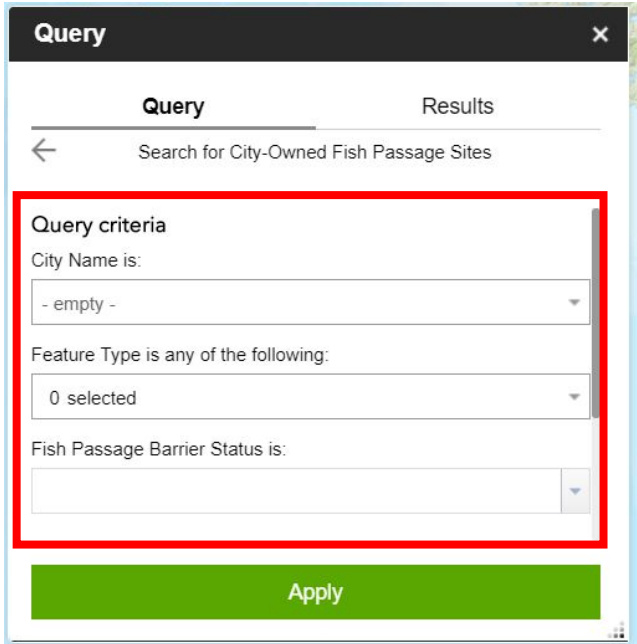
1 To search for city-owned fish passage sites, first click on the “Query” icon in the top left corner of the application.



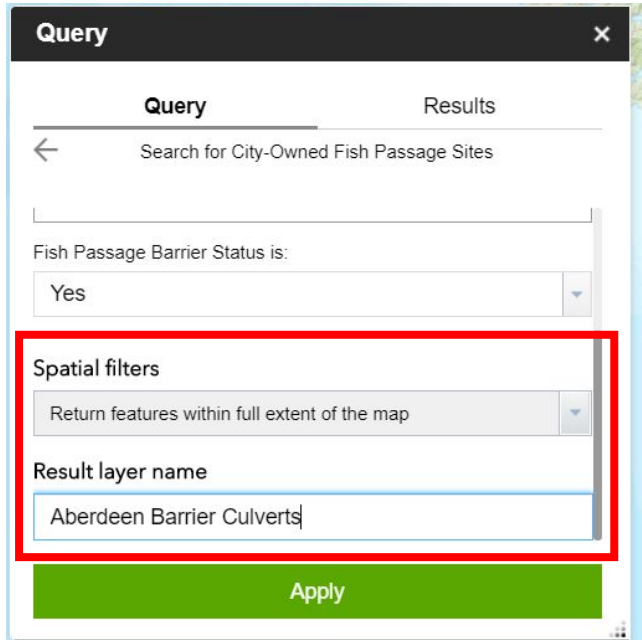
2 Next, select the “Search for City-Owned Fish Passage Sites” query.



3 Use the dropdown menus to select your city, the fish passage feature type(s) (e.g., culvert, dam, etc.) that you’re interested in, and the barrier status of these features.



4 If you scroll further down in this window, you’ll see that you can change your search area, if desired. You can also change the “Result layer name” to something more descriptive than the default.

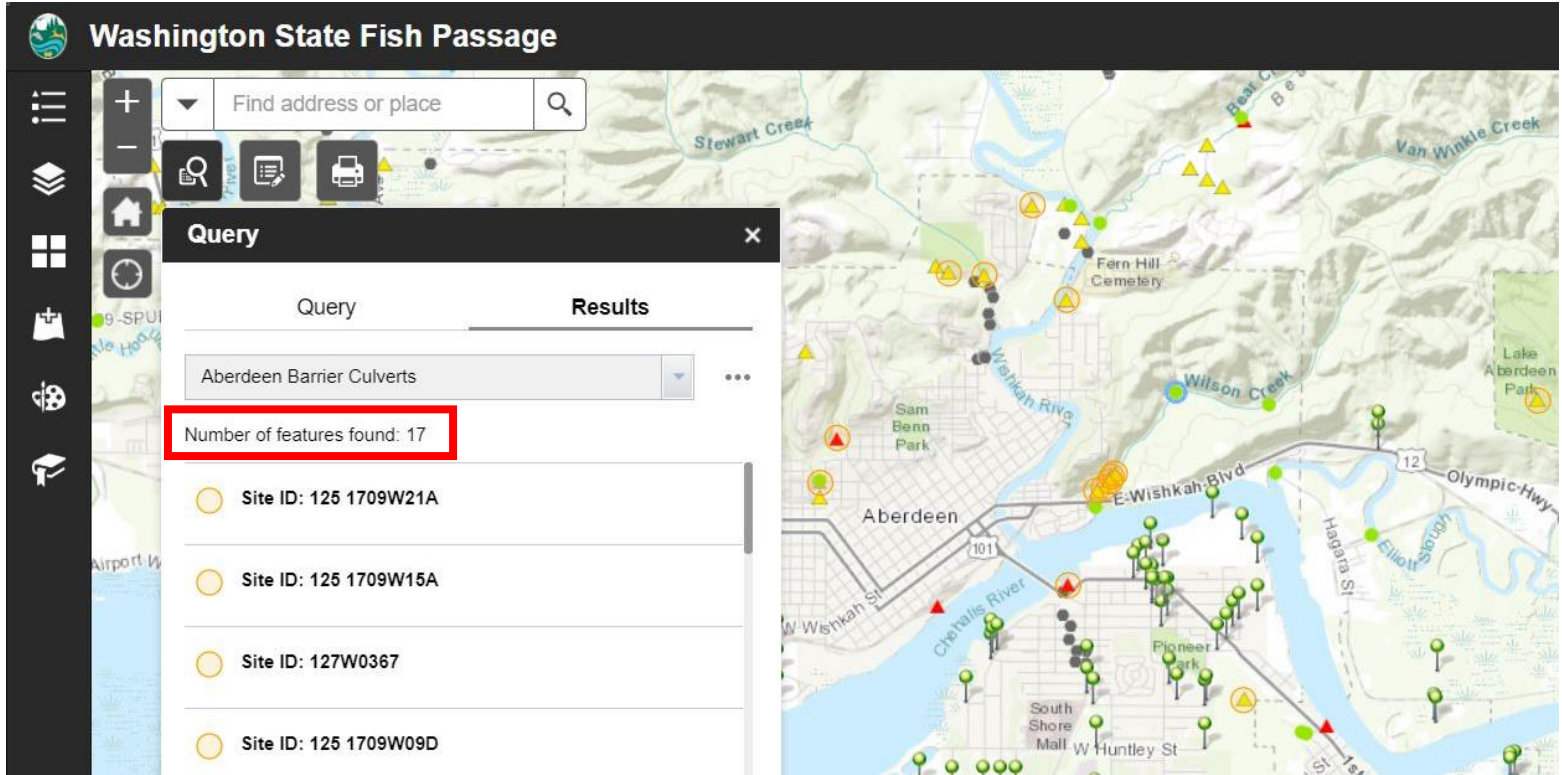


Note that the only required information is “City Name;” selecting a feature type or barrier status is optional if you simply wish to return all city-owned sites.

Once you’re satisfied with all of your search parameters, click “Apply.” Depending on how many sites there are, you may have to wait a few moments for results to appear.

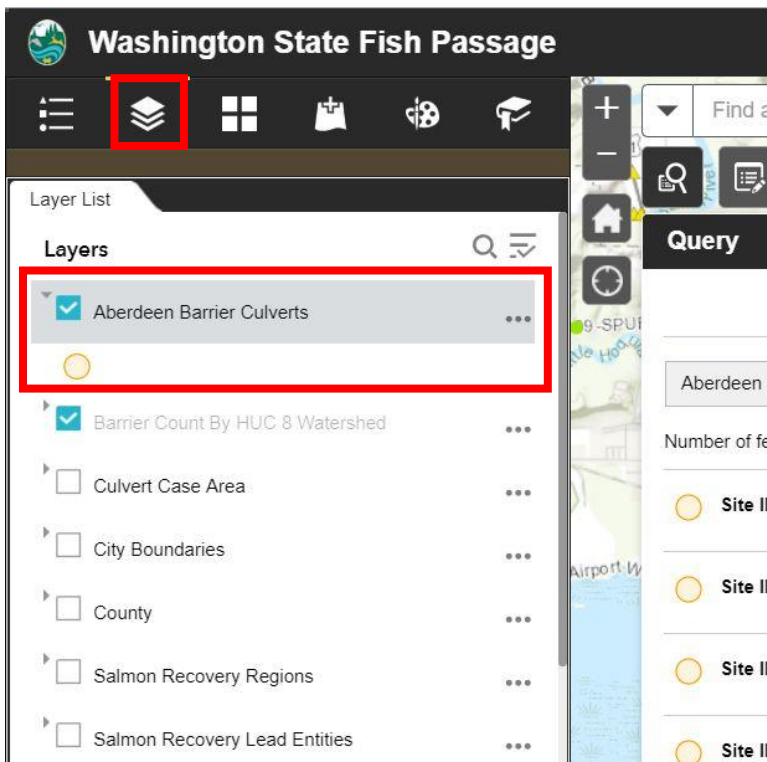
5

Once your query results load, you'll see a list of relevant sites appear in the Query window, as well as new points on the map (symbolized by orange circles). You can also see the total number of city-owned sites ("Number of features found") near the top of the Query window.



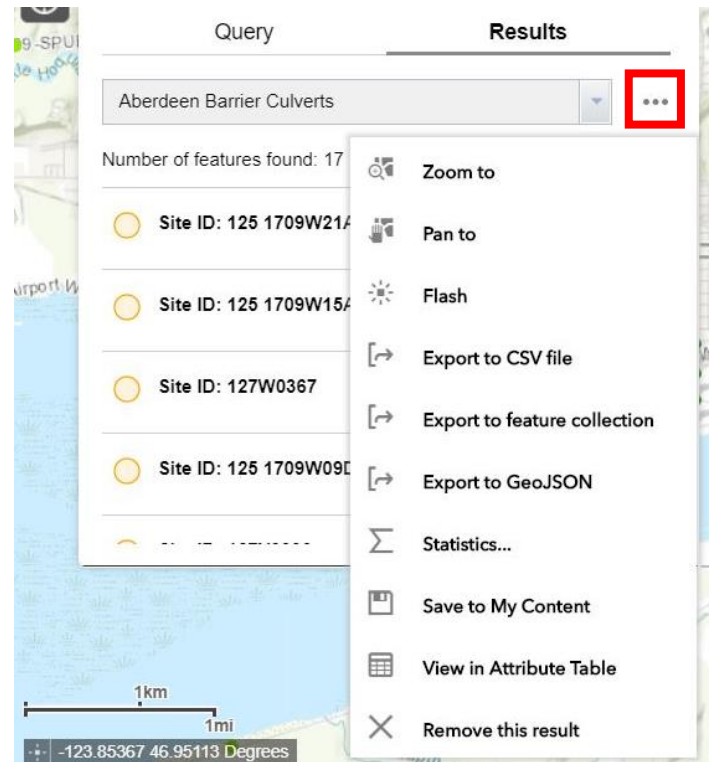
6

If you click on the Layer List in the sidebar on the left side of the screen, you'll see that a new layer with your query results has been added at the top. You can toggle this layer on or off by clicking the check box.



7

To save a copy of the query results, click on the ellipsis button next to the query name. You'll see a number of options for exporting the results in different formats, including as a .csv file or to an ArcGIS Online account.



Please note that any data you download only represent a snapshot in time; the WDFW fish passage database changes frequently as sites are added or reassessed.